

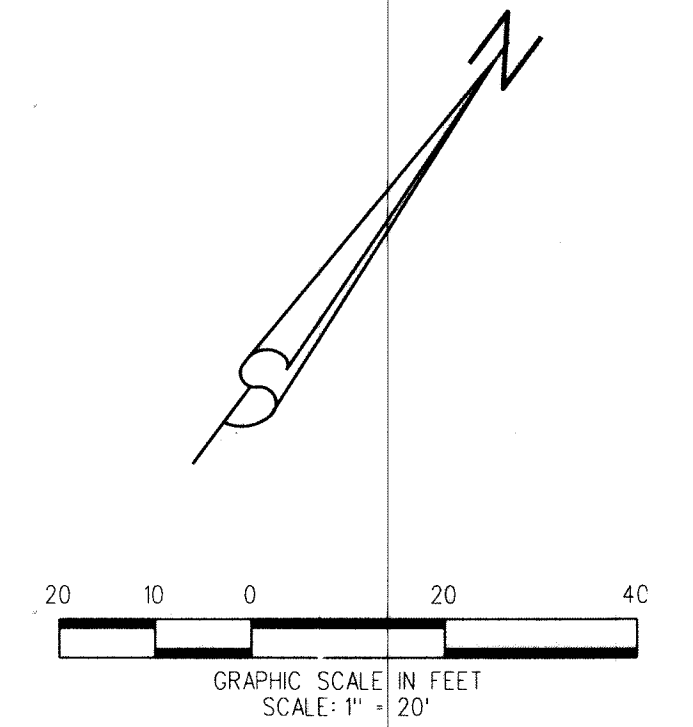
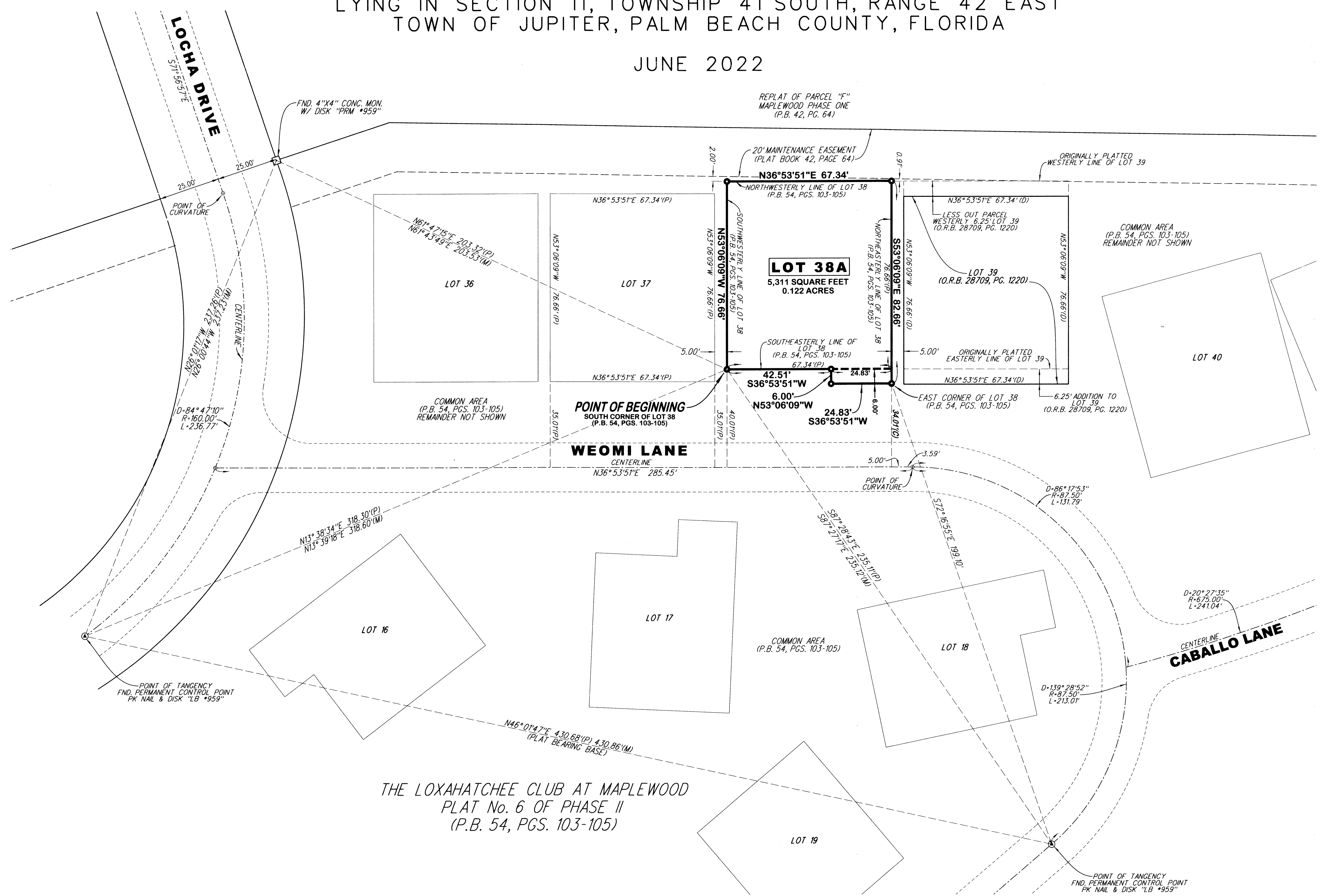
LOXAHATCHEE CLUB AT MAPLEWOOD PLAT No. 31 OF PHASE II

BEING A REPLAT OF LOT 38, AND A PORTION OF THE COMMON AREA,
AS SHOWN ON THE PLAT OF THE LOXAHATCHEE CLUB AT MAPLEWOOD PLAT No. 6 OF PHASE II,
RECORDED IN PLAT BOOK 54, PAGES 103 THROUGH 105, PUBLIC RECORDS OF PALM BEACH COUNTY, FLORIDA
LYING IN SECTION 11, TOWNSHIP 41 SOUTH, RANGE 42 EAST
TOWN OF JUPITER, PALM BEACH COUNTY, FLORIDA

JUNE 2022

159

SHEET 2 OF 2



LEGEND:

- = SET 5/8" IRON ROD & ALUMINUM CAP "PRM LB4431"

ABBREVIATIONS:

- (C) = CALCULATED
- (D) = PER DEED
- (M) = MEASURED ON SUBJECT PLAT
- (P) = AS SHOWN ON SUBJECT PLAT
- D = CURVE'S DELTA ANGLE
- L = CURVE'S ARC LENGTH
- MON. = MONUMENT
- O.R.B. = OFFICIAL RECORD BOOK
- P.B. = PLAT BOOK
- PCP = PERMANENT CONTROL POINT
- PG. = PAGE
- PGS. = PAGES
- PRM = PERMANENT REFERENCE MONUMENT
- R = CURVE'S RADIUS
- W/ = WITH

THE LOXAHATCHEE CLUB AT MAPLEWOOD
PLAT No. 6 OF PHASE II
(P.B. 54, PGS. 103-105)

LIDBERG LAND SURVEYING, INC.
LB4431 675 West Indiantown Road, Suite 200, Jupiter, Florida 33458 TEL. 561-746-8454

CAD:	K:\N\UST \ 114142 \ 54-103 \ 16-100A-306 \ 16-100A-306.DGN		
REF.			
FLD.		FB. PG.	JOB 16-100A-306
OFF.	CASASUS		DATE JUNE 2022
CKD.	D.C.L.	SHEET 2 OF 2	DWG. D16-100P